



PT Basis Pancakarya

Jl. Raya Sumber Jaya No. 61, Tambun 17510, Bekasi Timur, Jawa Barat, Indonesia
Telp: 021-93009536 Fax: 021-82428098 Email: cs@basisrubber.com http://www.basisrubber.com

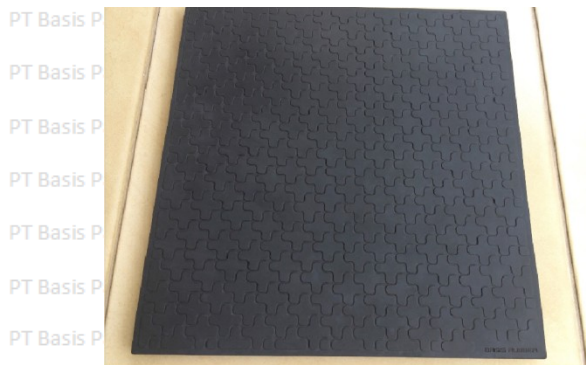
PT Basis Pancakarya PT Basis Pancakarya PT Basis Pancakarya PT Basis Pancakarya PT Basis Pancakarya PT Basis Pancakarya

PT Basis Pancakarya PT Basis Pancakarya PT TECHNICAL DATA SPECIFICATION Basis Pancakarya PT Basis Pancakarya

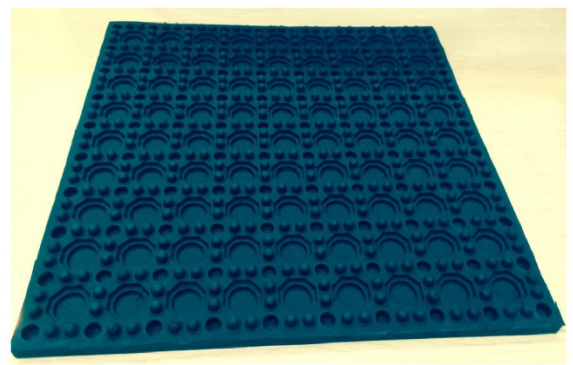
Product Description

Medium High Voltage Insulation Interlocking Natural Rubber Mats are best quality non slip and anti fatigue-modular rubber mats that specially design for good electrical insulation (dielectric strength up to 90 kV) and have low temperatur flexibility, good weather, water and abrasion- resistance. These mats don't give bad smells, because they are made from 100 % pure rubber and high quality ingredients . Thanks to their modularity, these mats are also ideal to cover large, irregular and uneven areas.

PT Basis Pancakarya PT Basis Pancakarya PT Basis Pancakarya PT Basis Pancakarya PT Basis Pancakarya PT Basis Pancakarya



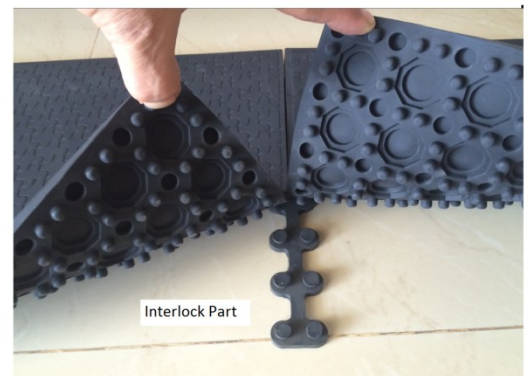
Top View



Back View



Side View



Interlock Part

PT Basis Pancakarya PT Basis Pancakarya PT Basis Pancakarya PT Basis Pancakarya PT Basis Pancakarya PT Basis Pancakarya

Product ID : Natural Rubber- Insulation IRM 2001

PT Basis Pancakarya PT Basis Pancakarya PT Basis Pancakarya PT Basis Pancakarya PT Basis Pancakarya PT Basis Pancakarya

Applications : Electrical Insulation Rubber Mats (ASTM D178 Type IIA-Class 2)

PT Basis Pancakarya PT Basis Pancakarya PT Basis Pancakarya PT Basis Pancakarya PT Basis Pancakarya PT Basis Pancakarya

Fresh and Salt Water Resistance : Good

PT Basis Pancakarya PT Basis Pancakarya PT Basis Pancakarya PT Basis Pancakarya PT Basis Pancakarya PT Basis Pancakarya

Abrasion Resistance : Good

PT Basis Pancakarya PT Basis Pancakarya PT Basis Pancakarya PT Basis Pancakarya PT Basis Pancakarya PT Basis Pancakarya

Soap and Detergent Resistance : Good

PT Basis Pancakarya PT Basis Pancakarya PT Basis Pancakarya PT Basis Pancakarya PT Basis Pancakarya PT Basis Pancakarya

Weather Resistance : Good

PT Basis Pancakarya PT Basis Pancakarya PT Basis Pancakarya PT Basis Pancakarya PT Basis Pancakarya PT Basis Pancakarya

Ozone Resistance : Good

PT Basis Pancakarya PT Basis Pancakarya PT Basis Pancakarya PT Basis Pancakarya PT Basis Pancakarya PT Basis Pancakarya

Minerals/ Petroleums Oils Resistance : Not Recommended

PT Basis Pancakarya PT Basis Pancakarya PT Basis Pancakarya PT Basis Pancakarya PT Basis Pancakarya PT Basis Pancakarya

Flame Retardency : Not Recommended

PT Basis Pancakarya Recommended maximum working Voltage : 17 KV AC PT Basis Pancakarya PT Basis Pancakarya

PT Basis Pancakarya Color available : Black, Grey, Blue and Brown PT Basis Pancakarya PT Basis Pancakarya PT Basis Pancakarya

PT Basis Pancakarya PT Basis Pancakarya PT Basis Pancakarya PT Basis Pancakarya PT Basis Pancakarya PT Basis Pancakarya

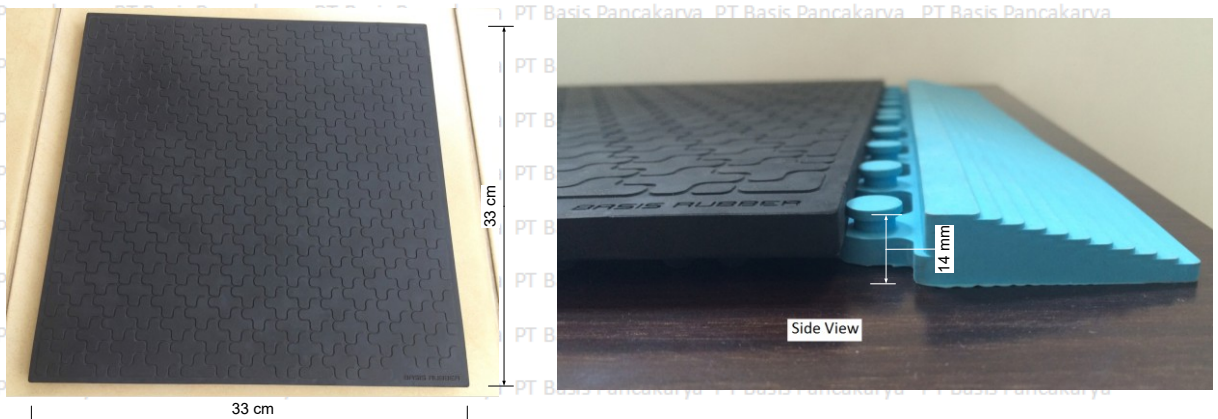


PT Basis Pancakarya

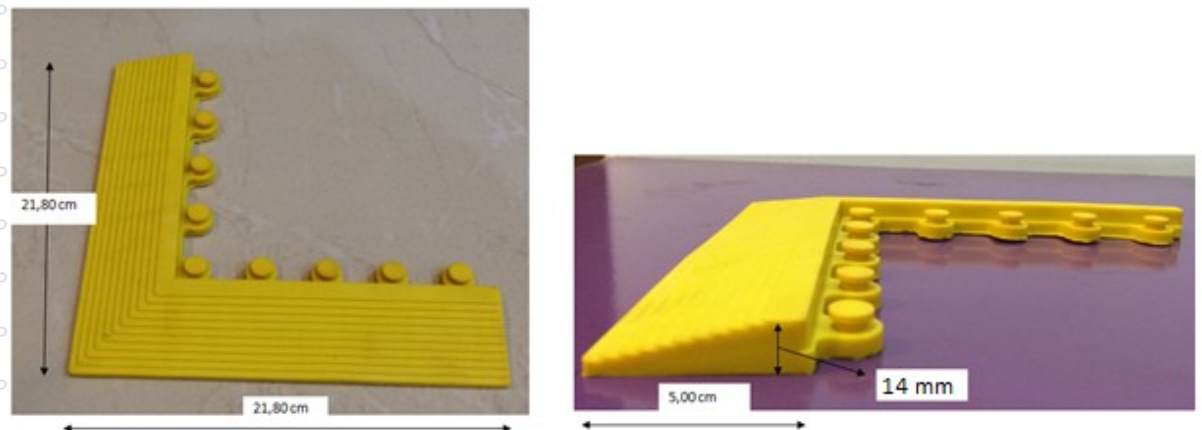
Jl. Raya Sumber Jaya No. 61, Tambun 17510, Bekasi Timur, Jawa Barat, Indonesia
Telp: 021-93009536 Fax: 021-82428098 Email: cs@basisrubber.com http://www.basisrubber.com

Dimension

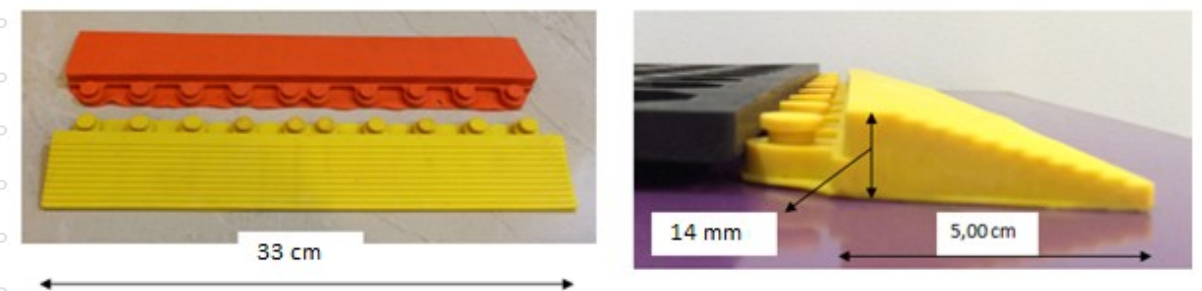
a) Rubber mat : L x W x H = 33 cm x 33 cm x 14 mm ; Weight : 1,28 kg /pcs



b) L-Shape - Beveled Edge : 21,80 cm x 21,80 cm x 14 mm ; Weight : 170 gr /pcs



c) Strip Shape - Beveled Edge : 5 cm x 33 cm x 14 mm ; Weight : 150 gr /pcs





PT Basis Pancakarya

Jl. Raya Sumber Jaya No. 61, Tambun 17510, Bekasi Timur, Jawa Barat, Indonesia
Telp: 021-93009536 Fax: 021-82428098 Email: cs@basisrubber.com http://www.basisrubber.com

PT Basis Pancakarya PT Basis Pancakarya PT Basis Pancakarya PT Basis Pancakarya PT Basis Pancakarya PT Basis Pancakarya

Physical Properties

PT Basis Pancakarya PT Basis Pancakarya PT Basis Pancakarya PT Basis Pancakarya PT Basis Pancakarya PT Basis Pancakarya

	Test Method		Unit
Hardness	ASTM D2240	60 ± 5	Shore A
Density	ASTM D297	1,46	gr/cm ³
Tensile Strength	ASTM D412	≥ 8	mpa
Elongation at Break	ASTM D412	≥ 300	%
Tear Resistance, Die C	ASTM D624	≥ 10	N/mm
Abrasion	DIN 53516	≤ 550	mm ³
Oils Resistance (Volume change)	ASTM D471	N/A	%
Temperature Resistance	ASTM D5499	-30 .. + 85	°C
Electrical Properties			
Surface Resistivity	ASTM D 257	> 2. 10 ¹⁰	Ohm
Volume Resistivity	ASTM D 257	> 1. 10 ¹³	Ohm. cm
Dielectric Strength	ASTM D149	> 90	kV/cm
Interlocking Sections			
Volume Resistivity	ASTM D 257	> 1. 10 ¹²	Ohm. cm
Dielectric Strength	ASTM D149	> 65	kV/cm
After Aging Properties			
Ozone Resistance (50 pphm, 3h, 40°C, 20% Strain)	ASTM D 518	No Cracks	
Moisture Absorption (immersion in Water ; 24 h, 27°C)	ASTM D570	< 0,5	%

PT Basis Pancakarya PT Basis Pancakarya PT Basis Pancakarya PT Basis Pancakarya PT Basis Pancakarya PT Basis Pancakarya

Safety-Usage:

PT Basis Pancakarya PT Basis Pancakarya PT Basis Pancakarya PT Basis Pancakarya PT Basis Pancakarya PT Basis Pancakarya

- Stand on the rubber mats at least 10 cm away from the edges!
Never stand at the edges of the rubber mats ! (Electrical current leakage danger !).
- Rubber mats should be inspected regularly to ensure that it is not damaged, especially the interlock sections. The interlock rubber parts must be bonded tightly to the mats: **Never use rubber mats with cracks , punctures or looseness interlock parts condition ! (Electrical current leakage danger !)**.
- Rubber mats should be used in addition to all other safety equipment that is required (Glove, Shoes, Helmet etc) .
- Vacuumed or swept frequently to remove debris that may imbed in the mat.
- In case of flood : clean any dirt from the rubber surfaces and let dry thoroughly before reuse
- If rubber mats has been stored in rolls for a long time, they should be washed first in warm water, dry thoroughly , before testing to relax the rubber from storage and retain their natural shape.

PT Basis Pancakarya PT Basis Pancakarya PT Basis Pancakarya PT Basis Pancakarya PT Basis Pancakarya PT Basis Pancakarya

Storage :

PT Basis Pancakarya PT Basis Pancakarya PT Basis Pancakarya PT Basis Pancakarya PT Basis Pancakarya PT Basis Pancakarya

- Store in their natural shape, not be folded, creased or compressed in their original packaging in a cool, dark and dry place.
- Avoid heat, direct sunlight and contact with oxidation catalysts

PT Basis Pancakarya PT Basis Pancakarya PT Basis Pancakarya PT Basis Pancakarya PT Basis Pancakarya PT Basis Pancakarya

Warranty :

PT Basis Pancakarya PT Basis Pancakarya PT Basis Pancakarya PT Basis Pancakarya PT Basis Pancakarya PT Basis Pancakarya

- Six months subject to normal use (from the date of shipment)
We will replace or repair any interlocking rubber mats that cracks, punctures, looseness or damaged because of weather, or electrical high voltage.

PT Basis Pancakarya PT Basis Pancakarya PT Basis Pancakarya PT Basis Pancakarya PT Basis Pancakarya PT Basis Pancakarya